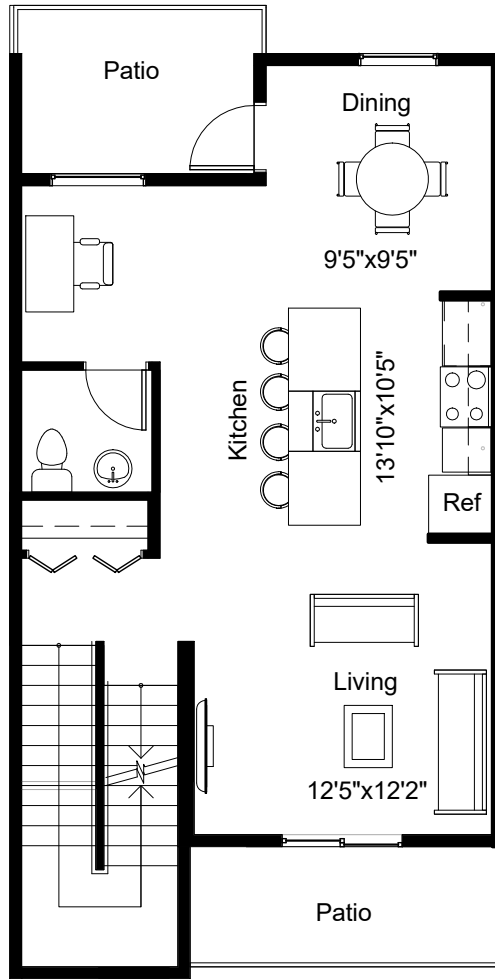
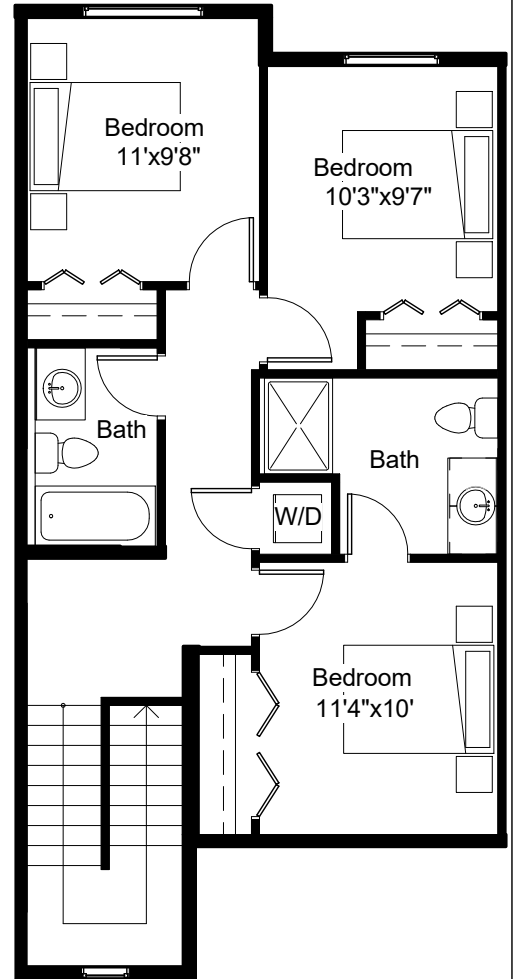


276 SF  
(+Garage 439 SF)



664 SF



736 SF

① First Floor/Garage  
1/8" = 1'-0"

② Second Floor  
1/8" = 1'-0"

③ Third Floor  
1/8" = 1'-0"

**3 Bedroom, 2 1/2 bathroom unit**

DISCLAIMER:

WE RESERVE THE RIGHT TO MODIFY FEATURES, PLANS, SPECIFICATIONS WITHOUT NOTICE OR OBLIGATION. SQUARE FOOTAGES AND ROOM DIMENSIONS ARE APPROXIMATE ONLY.



**SAGE HILL**  
**GARDEN**

By Aldo Rossi Homes

Floor Plans 1,676 SF  
Building No. 4 Unit 349

349 Sage Hill Circle NW Calgary AB

Scale 1/8" = 1'-0"